

2nd International Research Meeting on Artificial Intelligence (IRMIA-2020)

Artificial Intelligence, Humans, Organizations, Society

According to the 2018 report of the World Economic Forum, AI will be increasingly present in our professional and personal lives. Some people think that this is a great opportunity which will revolutionize the world and our daily lives. Others see it as a threat to jobs and freedom. According to J. G. Ganascia, a researcher at the Sorbonne-University Computer Laboratory (LIP6), AI refers to “a scientific discipline that aims to break down intelligence into elementary functions, to the point where a computer can be built to simulate them.” The fields of AI and machine learning offer infinite opportunities for research and development and building solutions that can help human civilization and societies.

As such, AI research concerns many scientific disciplines (Human and Social Sciences, Management Sciences, Economics, Engineering Sciences, Medical Sciences, etc.). The objective is not to be frightened or overtly fantasize, but to imagine and prepare ourselves to live the world of tomorrow with serenity. Researchers from different disciplines have an important role to play as pathfinders.

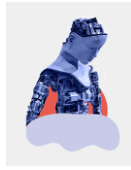
You are cordially invited to submit your research papers for presentation at the 2nd International Research Meeting on Artificial Intelligence (IRMIA-2020) that will take place on 15 October 2020 in La Rochelle—a coastal city in southwestern France and one of the world’s most popular tourist destinations.

Co-organized by La Rochelle Business School – Excelia Group and the Cyber Society, IRMIA-2020 provides an excellent avenue for disseminating your precious scholarly and practice-based work; and network with academics, students and practitioners to exchange ideas on new research results, and challenges faced by individuals, organizations and societies due to the fast-paced developments in artificial intelligence (AI) technologies.

TOPICS

We welcome submissions on AI and associated issues such as impacts, benefits, value, challenges, ethics, techno-management, among others, in relation to various topic areas listed below. However, the below given list of the potential topic areas should be seen as a guide for submission only, and **IRMIA-2020** welcomes submissions in any other areas related to AI that may not have been listed below:

- Is AI compatible with CSR?
- What is the effect of AI on Accounting/Financial Accounting?
- Banking, corporate governance and finance seem to be affected by AI?
- What change in Entrepreneurship subject to the development of AI?
- Technologies and Strategic Management



- New opportunities for Marketing, Sales and Consumption with AI
- Law and management, ethics and legal liability, should AI be regulated?
- The potential contribution of AI to Operations, Supply Chain Management and the circular economy?
- AI and organizational behavior, communication and information systems
- Management and economic issues in the public (and not-for-profit) sector
- Theoretical and applied artificial intelligence
- Inputs and limitations in Technology and Innovation Management
- The use of AI in Tourism, mobility, accommodation ...
- Effects of AI on Employment, Competitiveness, Productivity
- Applications of AI in Medicine, Health and Wellness
- Can AI bring about a revolution in education, training?
- How can AI help Project Management?

PAPER SUBMISSION PROCEDURE

Authors are invited to submit their full papers in French or in English* in PDF file, via e-mail: drillond@excelia-group.com and ramj@excelia-group.com

Papers presented at the conference will be recommended for submissions to special issues of associated journals such as VSE and IP&M More information can be found on the conference's website.



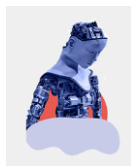
IMPORTANT DATES

1. Submission of an intention on 02/03/20
2. Opinion of the Scientific Committee on 03/04
3. Filing of the full text V1 05/06
4. Reviewers' feedback 17/07
5. Submission deadline (full paper): 08/09/20

Conference event: October 14-15, 2020

CONFERENCE VENUE

Excelia Group, Campus La Rochelle Business School –



FURTHER INFORMATION

Please visit our website for detailed information: <https://www.excelia-group.com/>
For queries, please contact the organizers at: marechalf@excelia-group.com

Of course we'll be delighted to welcome you in La Rochelle. It is a very beautiful tourist and historical city. However, as an alternative, we also offer doing an online presentation through a video link if you are unable to participate in person during the conference. We have already done the same during our 2019 conference.»

ORGANIZATION

ORGANISATION COMITE D'ORGANISATION

Dominic DRILLON
Jiwat Ram
Poonam OBEROI

Contacts

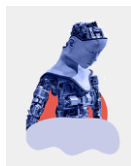
drillond@excelia-group.com
ramj@excelia-group.com
oberoip@excelia-group.com

Institutions

EXCELIA Group, La Rochelle
EXCELIA Group, La Rochelle
EXCELIA Group, La Rochelle

COMITE SCIENTIFIQUE

Isabelle BARTH	Directrice Générale INSEEC Business School et Directrice de la Recherche INSEEC U
Marc BONNET	Professeur des Universités, ISEOR, IAE, Université Jean-moulin, Lyon
Georges BOTET-PRADEILLES	Psychologue, Président Honoraire de l'I.P&M
Christian BOURION	Professeur Honoraire, ICN Business School, Nancy-Metz
Jean-Claude CASALEGNO	Professeur, ESC Business School, Clermont-Ferrand
Isabelle CHOQUET	Professeur, ICHEC, Bruxelles
Valérie CORDIER	Professeur assistant, La Rochelle Business School, Excelia-Group
Thibaud CUENOUD	Professeur associée, La Rochelle Business School, Excelia-Group
Patricia DAVID	Professeur Emérite, ESDES, Université Catholique de Lyon
Sylvie DEFFAYET	Professeur, EDHEC Business School, Roubaix
Emmanuel DIET	Psychologue, Psychanalyste, Analyste de groupe et d'institution, Rédacteur en chef de la revue « Connexions »
Anne-Lise DIET	Psychanalyste
Dominique DRILLON	Professeur HDR, Psychanalyste, La Rochelle Business School Excelia Group
Jean-Pierre DUMAZERT	Professeur Associé, La Rochelle Business School Excelia Group
Vladislav FOMIN	Professeur, Kaunas Faculty, Vilnius University, Lithuania
Juliette FRONTY	Enseignant-Chercheur, ESCP Europe, Paris
Gino GRAMACIA	Professeur Émérite, Université de Bordeaux
Bernard GUILLON	Maître de Conférences HDR, Université de Pau et des Pays de l'Adour
Valentina KIROVA	Professeur associée, La Rochelle Business School Excelia Group
Joelle LAGIER	Professeur émérite, HDR, La Rochelle Business School Excelia Group



Nathalie MONTARGOT
Philippe MOUILLOT
Fatiha NAOUI-OUTINI
Poonam OBEROI
Mario PERINI
Yvon PESQUEUX
Barbara PIAZZA
Jean-Pierre PINEL
Nathalie TESSIER
Philippe SAÏELLI
Henri SAVALL
Annick SCHOTT
Thibault de SWARTE
Thomas STENGER
Isabella TATER
Lise VIEIRA
Véronique ZARDET
Lili ZHENG

Professeur associée, La Rochelle Business School Excelia Group
Maître de Conférence, HDR, IAE de Poitiers,
Professeur associée, La Rochelle Business School, Excelia Group
Professeur associée, La Rochelle Business School, Excelia Group
Directeur Scientifique, Il Nodo Groupe, Turin
Professeur, Titulaire Chaire des Systèmes d'organisation, CNAM, Paris
Psychologue, Psychothérapeute, Il Nodo Groupe, Turin
Psychanalyste, Professeur des Universités, Paris-Nord
Enseignant-Chercheur, ESDES, Université Catholique de Lyon
Psychanalyste, Maître de Conférences, Université de Valenciennes
Professeur Emérite, ISEOR, Université Jean-Moulin, Lyon
Maître de Conférences HDR, Université Bordeaux-Montaigne
Maître de Conférences HDR, Institut Mines Télécom Bretagne-Pays de Loire
Maître de conférences, HDR, IAE de Poitiers
DRH Courvoisier, Beam-Suntory, Doctorante en gestion (4^{ème} année)
Professeur des Universités, Université Bordeaux-Montaigne
Professeur des Universités, IAE de Lyon, ISEOR, Présidente de l'ADERSE
Professeur associée, La Rochelle Business School, Excelia Group

Scientific partners



Kaunas
Faculty

Partners companies and institutions